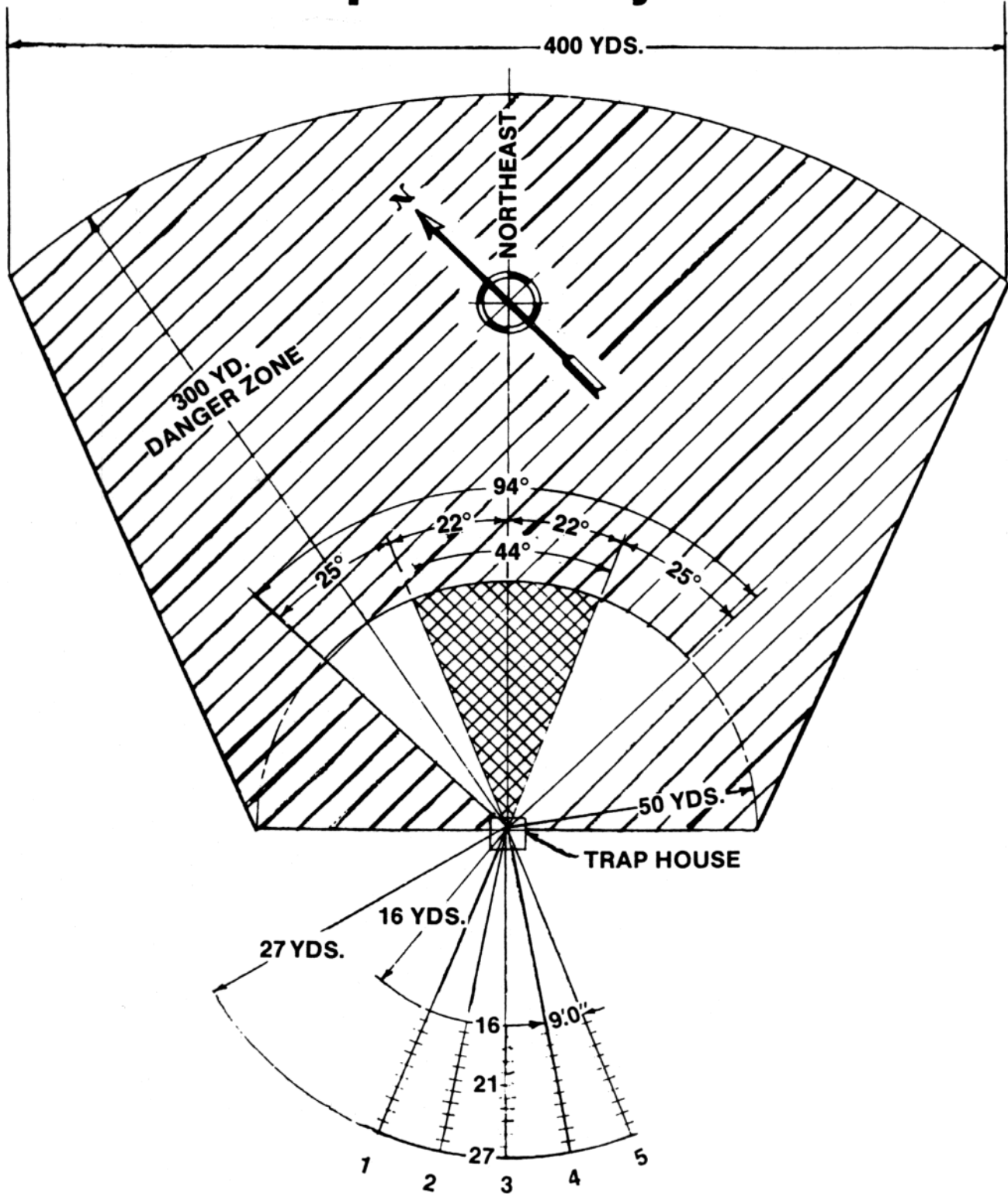
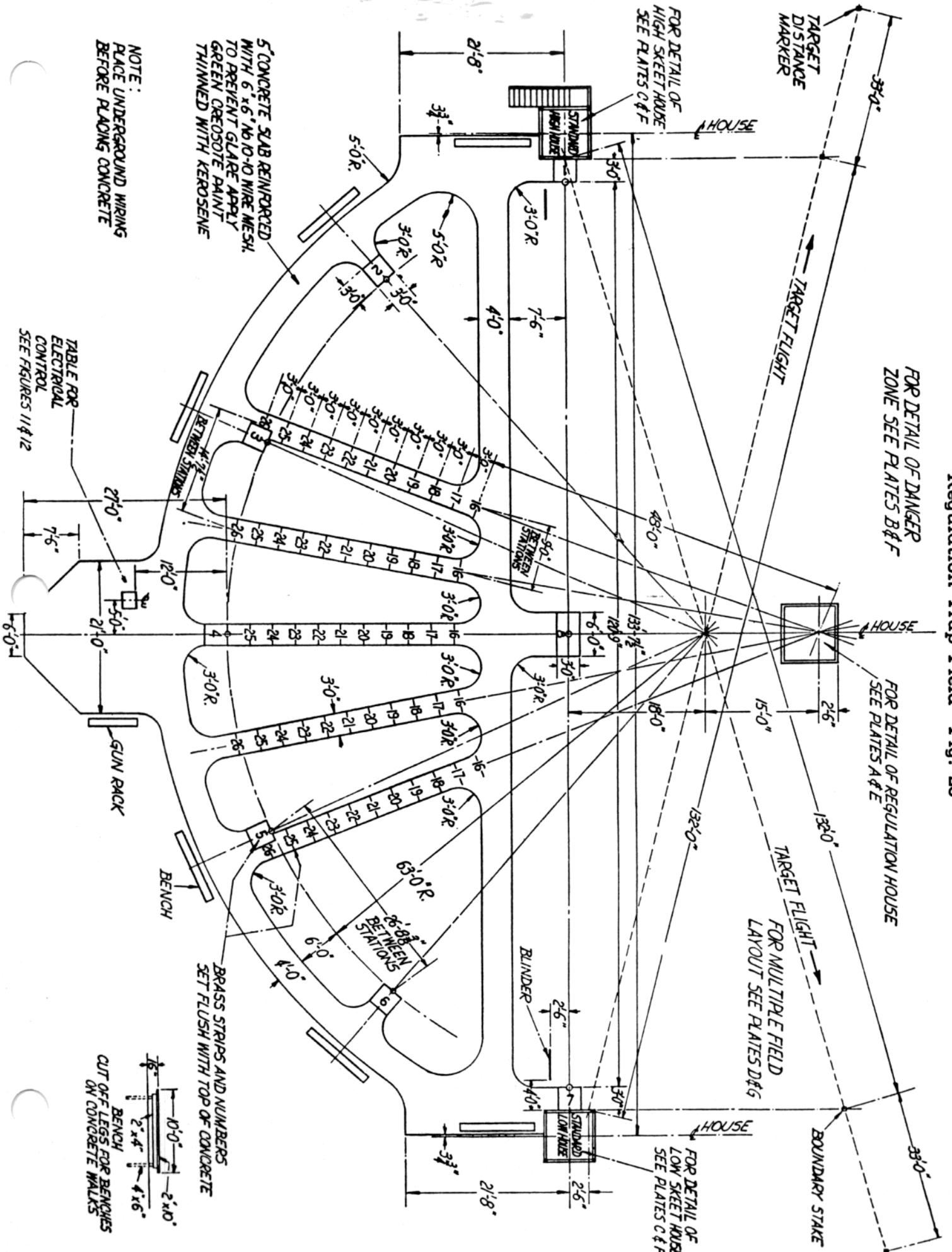


Trap Field Layout



The above field layout is recommended when laying out Trap shooting fields for Western traps.

Combination Skeet and Regulation Trap Field Fig. 23



FOR DETAIL OF DANGER ZONE SEE PLATES B & F

FOR DETAIL OF REGULATION HOUSE SEE PLATES A & E

FOR MULTIPLE FIELD LAYOUT SEE PLATES D & G

FOR DETAIL OF HIGH SKEET HOUSE SEE PLATES C & F

FOR DETAIL OF LOW SKEET HOUSE SEE PLATES C & F

NOTE:
PLACE UNDERGROUND WIRING BEFORE PLACING CONCRETE

BENCH
CUT OFF LEGS FOR BENCHES ON CONCRETE WALKS

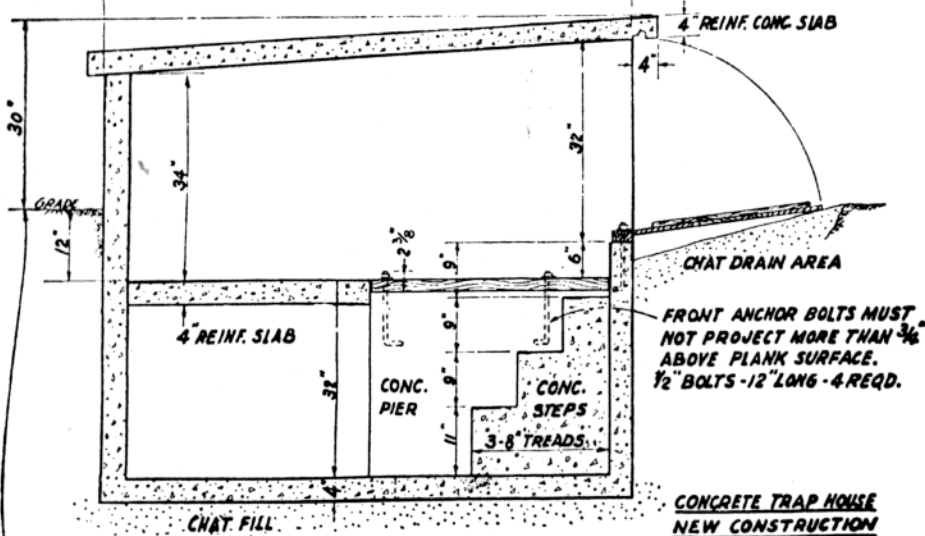
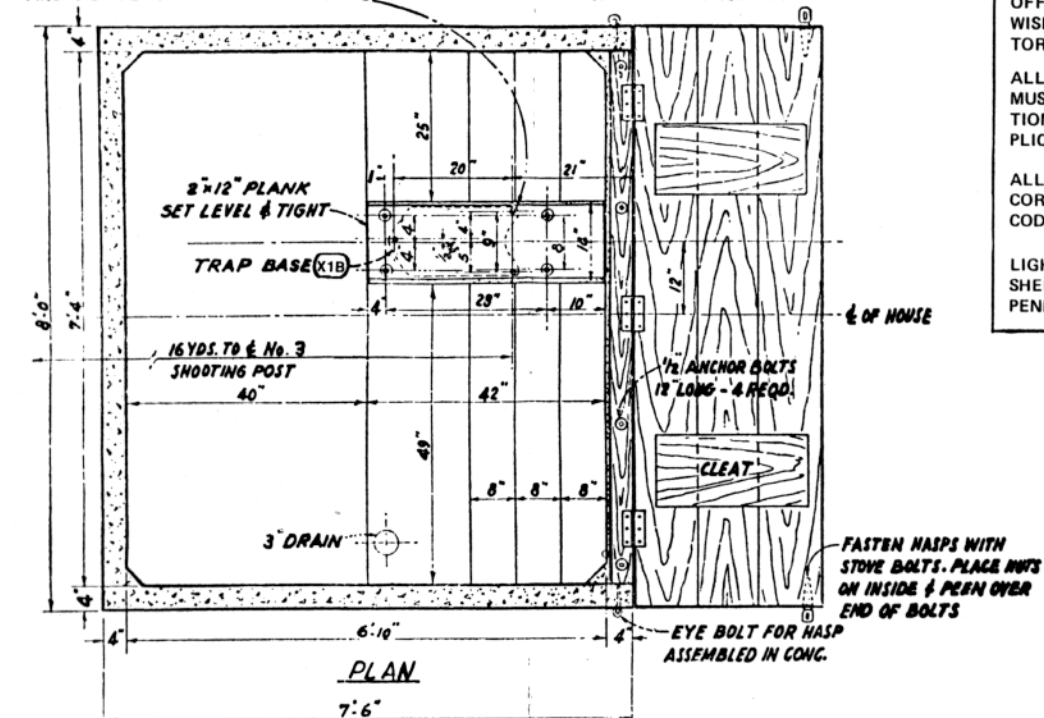
BRASS STRIPS AND NUMBERS SET FLUSH WITH TOP OF CONCRETE

TABLE FOR ELECTRICAL CONTROL
SEE FIGURES 11 & 12

NEW CONSTRUCTION—CONCRETE

3 HOLES IN PLANK FOR $\frac{1}{2}$ " x 4" CARRIAGE BOLTS ITEM X79. SPOT FROM TRAP WITH LEFT SIDE OF BASE X1 PARALLEL TO PLANK. INSERT FROM UNDERSIDE AND PLACE NUTS ON TOP.

NOTE: TRAP BASE MUST BE BOLTED TO PLANK ONLY—NOT TO CONCRETE.



NOTE: GRADE AT No. 3 SHOOTING STATION MUST BE WITHIN $\pm 4"$ OF THIS LEVEL FOR ROOF HEIGHT TO AGREE WITH A.T.A. RULES.

NEW CONSTRUCTION—CONCRETE

MATERIAL LIST

Lumber (Cut Size)		Description	
No. Required	Size	Description	
1	2" x 12" x 3'6"	Hardwood Trap Plank.	
5	4" x 4" x 5'0"	Shooting Posts.	
307	Square Feet of Wall Formwork.		
88	Square Feet of Slab Formwork.		
Clean and re-use formwork for door, door plate, door cleats and shooting post trays.			
Concrete for House, Pier and Steps			
33	Sacks cement	} 5½ cubic yards concrete.	
7,700	pounds Sand		
14,450	pounds Broken stone		
Miscellaneous Material			
No. Required		Description	
2	6" hinge hasps with necessary stove bolts.		
2	4" eye bolts. Eye to fit hinge hasps.		
3	4" x 6" butt hinges		
8	$\frac{1}{2}$ " x 12" anchor bolts with nuts and washers.		

—CAI

A MINIMUM CLEAT MUST BE MAINTAINED AND ANY OBSTRUCTION MORE THAN TWO FEET OFF TO PREVENT WISE GUARDED TOR INJURY.

ALL ELECTRICITY MUST BE IN ACCORDANCE WITH LOCAL ELECTRICAL CODES.

ALL CONSTRUCTION SHALL BE IN ACCORDANCE WITH LOCAL BUILDING CODES.

LIGHTS, DRAIN SHELVES AND PENDING ON CODE.

NOTION

FRANCE OF TWO FEET UNED BETWEEN TRAP UCTION. AREAS LESS SHOULD BE FENCED T ENTRY OR OTHER TO PREVENT OPERA-

UL INSTALLATIONS CORDANCE WITH NAICAL CODE AND AP-CODES.

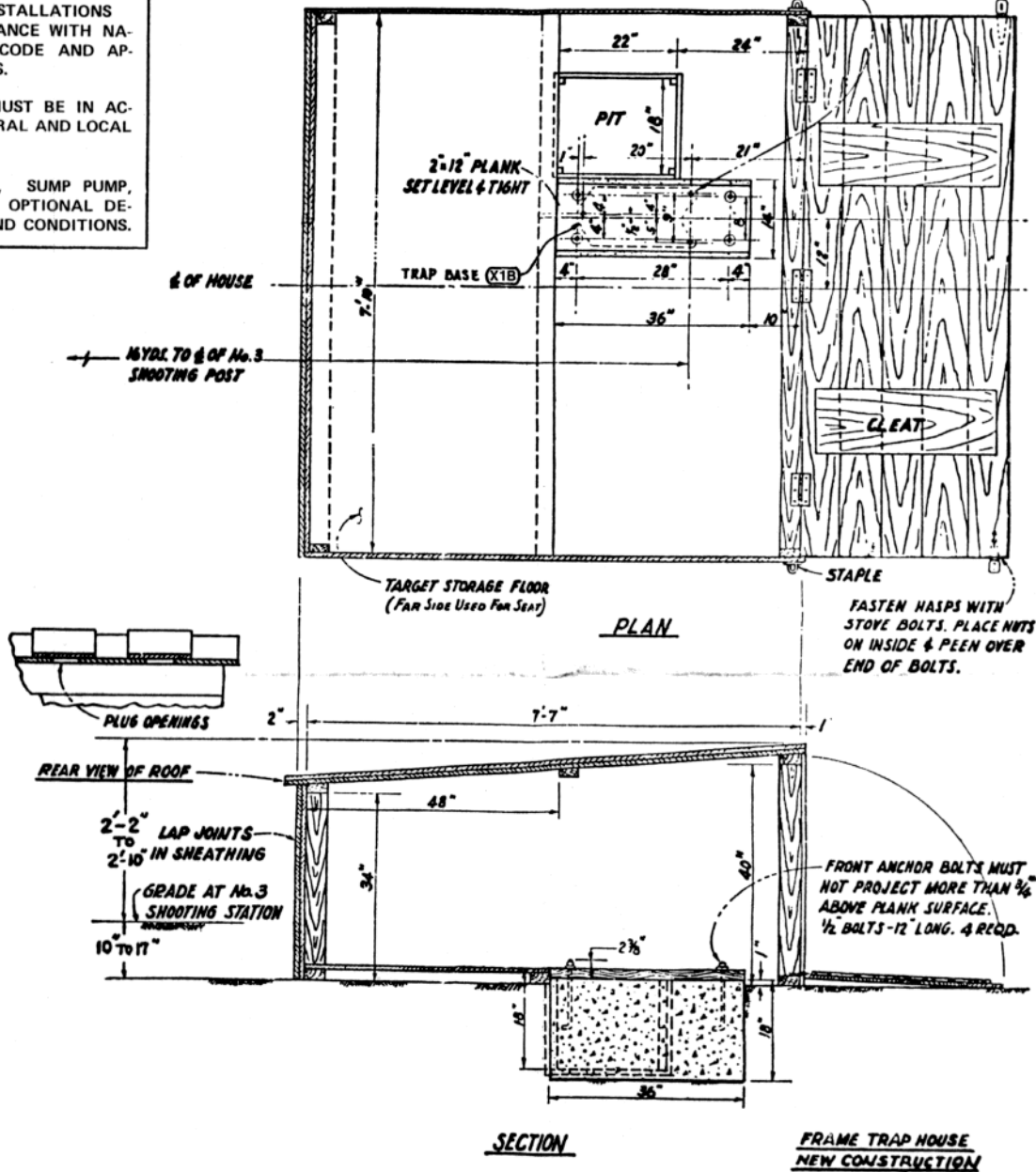
ION MUST BE IN AC-FEDERAL AND LOCAL

TILES, SUMP PUMP, STEPS OPTIONAL DE-ES AND CONDITIONS.

NEW CONSTRUCTION—FRAME

NOTE: TRAP BASE MUST BE BOLTED TO PLANK ONLY—NOT TO CONCRETE.

3 HOLES IN PLANK FOR 1/2"x4" CARRIAGE BOLTS, ITEM X79. SPOT FROM TRAP WITH LEFT SIDE OF BASE X1 PARALLEL TO PLANK. INSERT FROM UNDERSIDE AND PLACE NUTS ON TOP.



NEW CONSTRUCTION—FRAME

MATERIAL LIST

No. Required	Size	Lumber (Cut Size)	Description
2	2" x 4" x 3'-23 1/2"		Front corner post (between sill and rafters).
2	2" x 4" x 2'-8 1/2"		Rear corner post (between sill and rafters).
3	2" x 4" x 7'-10"		Plates (front and rear on top of corner posts).
2	2" x 4" x 7'-10"		Sills (under corner posts).
6	1" x 10" x 7'-9"		Sides (roof angle to be sawed in top board after corner posts are nailed in).
3	1" x 10" x 7'-10"		
1	1" x 8" x 7'-10"		Double sheathing on back, overlap joints
3	1" x 10" x 8'-0"		
1	1" x 8" x 8'-0"		
11	1" x 12" x 8'-0"		Roof laid batten style.
3	1" x 12" x 7'-10"		Door.
1	1" x 6" x 7'-10"		

2	1" x 12" x 3'-0"	Cleats.
1	2" x 4" x 7'-10"	Target storage floor.
10	1" x 10" x 3'-9"	
10	1" x 4" x 1'-8"	Pit lining.
10	1" x 4" x 1'-10"	
1	2" x 12" x 3'-0"	Hardwood Trap plank.
4	2" x 2" x 1'-6"	Corner posts for pit lining.
5	4" x 4" x 8'-0"	Shooting posts.
50	2" x 4" x 2'-0"	Stakes for handicap positions.
Miscellaneous		
No. Required		
2	6" hinge hasps with necessary stove bolts	
3	4" x 6" butt hinges	
4	1/2" x 12" anchor bolts with nuts and washers	
1	Sack cement	} 1/2 cubic yard concrete
280 pounds	Sand	
380 pounds	Broken stone	